



## **Designer penthouse with spacious terraces, garages and wine cellar**

№ объекта **2462**

### LOCATION

This luxurious, modern penthouse with top-quality furnishings, terraces and impressive views of St. Stephen's Cathedral is located in Margareten in the immediate vicinity of Margaretenplatz and the Schlossquadrat.

### ROOM LAYOUT

The penthouse extends over three floors and is divided as follows:

3rd floor: master area with bedroom and two wardrobes, hallway, spacious bathroom, wellness area with sauna, steam bath, whirlpool, terrace, anteroom, two WCs.

1st attic floor: dining room with open luxury kitchen, preparation kitchen, entrance hall, utility room, guest WC, master bedroom with open fireplace, guest bedroom with bathroom, two terraces

2nd attic floor: living area with open fireplace, dining area with open kitchen, terrace (covered with automatically opening side glazing), "barbecue terrace", a lounge terrace with floor glazing and designer outside stairs to the roof terrace

Roof terrace: automatic shading, lounge set, impressive view of St. Stephen's Cathedral

The penthouse has room heights from 2.70 m to 6.50 m.

All three floors of the penthouse are connected by direct lift access.

### EQUIPMENT

Gira BUS system with Smarthome control system

Access system with fingerprint

Air heat pump

Gas central heating with hot water preparation, underfloor heating

Air conditioning

Lighting systems inside and outside

Stone and wood surfaces

Large-area and frameless glazing with automatic opening function Ceiling cooling and fan coils

High-quality box fixtures

Luxury sanitary fittings

High-quality planting with automatic watering system

Automatic shading

A special highlight is the façade designed by the well-known artist Tillmann Kaiser with various light installations.

Furthermore, the flat has a high-quality equipped, air-conditioned wine cellar.

There is also a garage for 3 cars with e-charging stations.

## INFRASTRUCTURE

The excellent location offers the highest quality of life and an optimal infrastructure. Shopping facilities, restaurants, public transport (underground) and school facilities are in the immediate vicinity. Vienna's city centre and the Naschmarkt are within walking distance.

## INFORMATION

If interested, the entire property with a further seven flats of approx. 611 m<sup>2</sup> + approx. 38 m<sup>2</sup> terraces can be acquired.

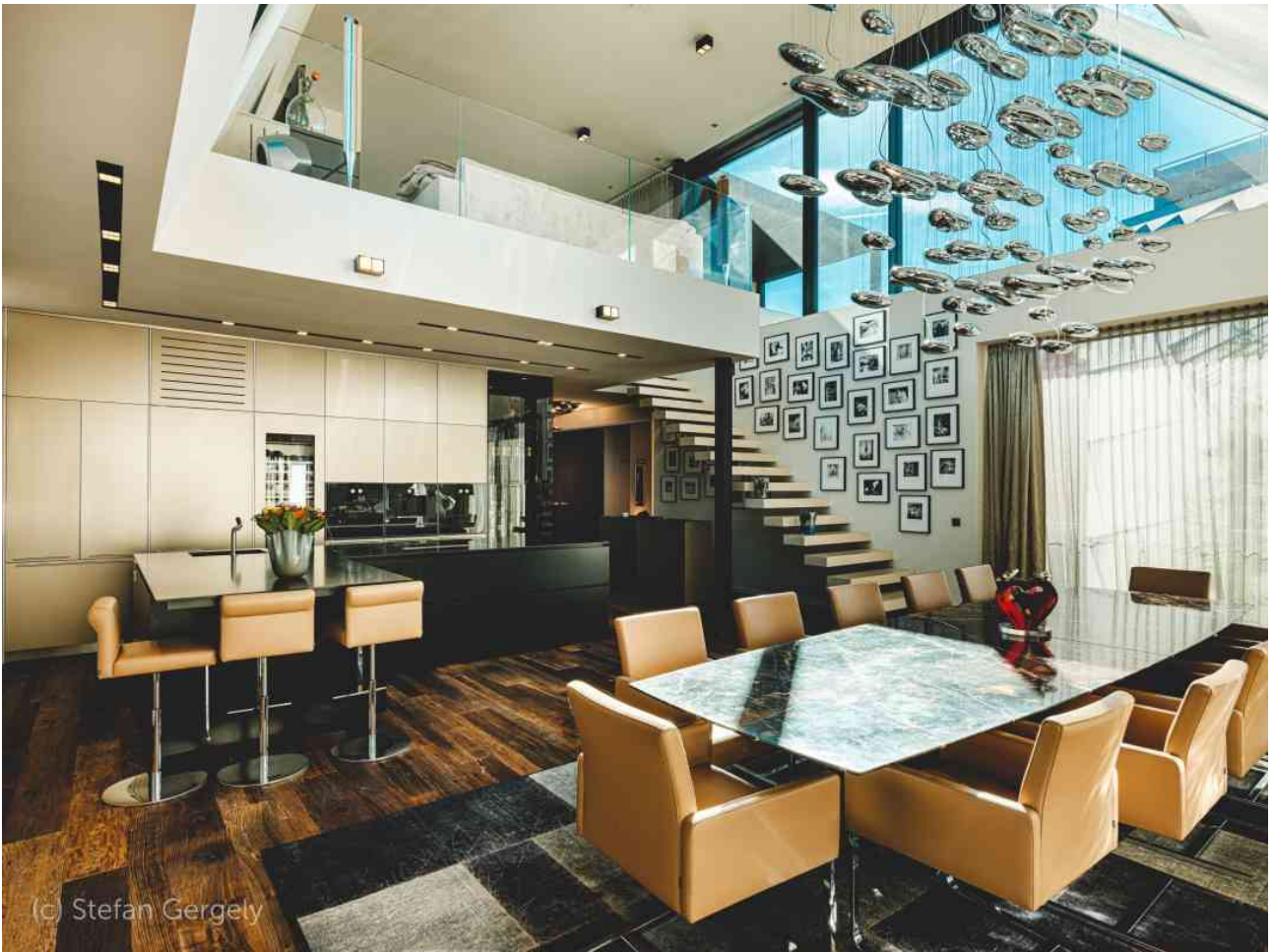
Purchase price on request.

Commission: 3 % + 20 % VAT

The above information is based on information and documents of the owner and is without guarantee on our part.

Wir weisen darauf hin, dass zwischen dem Vermittler und dem zu vermittelnden Dritten ein familiäres oder wirtschaftliches Naheverhältnis besteht.

Der Vermittler ist als Doppelmakler tätig.



## Подробности

- **Адрес** AUT-1050 Wien
- **Рядом с** Margaretenplatz/Schlossquadrat

- 
- **Жилая площадь** около 499 м<sup>2</sup>
  - **Площадь террасы** около 187 м<sup>2</sup>

- 
- **Комнаты** 5
  - **Ванные комнаты** 2
  - **Количество туалетов** 4
  - **Этажи** 6
  - **Терраса** 6

- 
- **Покупная цена** по запросу

- 
- **Готовность к заселению** nach Vereinbarung
  - **Год постройки** 2017

- Класс энергопотребления B
  - Класс энергопотребления B
  - Категория Wohnung
- 

## Ваше контактное лицо



**PETER MARSCHALL**

Телефон [+43 1 533 20 30](tel:+4315332030)

Эл. почта [office@marschall.at](mailto:office@marschall.at)

---

**С ПОМОЩЬЮ ДАННОГО QR-КОДА ВЫ БЫСТРО И ПРОСТО ПОПАДЕТЕ НА ДАННУЮ СТРАНИЦУ**



Просто сосканируйте графическое изображение с кодом с помощью считывающего устройства QR-кодов, имеющегося в Вашем смартфоне, и Вы сразу же попадете в нужное место на нашей домашней странице.